





BUILDING MEMORIES ON THE WATER

For every lifestyle and every family, **Godfrey** has been creating extraordinary boating experiences since 1958.

LX features state-of-the-art amenities and intuitive technology. Today's **Sanpan** offers the same great comfort that made it famous, now redesigned in a new package sure to impress all generations. **AquaPatio** pontoons are high-end, sport-performance machines. The **XP** offers an extreme sport pontoon experience. The all-new **Monaco** series brings your family captivating style and ultimate comfort. **Sweetwater** series are the trusted, versatile pontoons you know and love. The never compromising **SR** brings you family fun for less. No matter how you define boating, **Godfrey** has the pontoon for you.

LX | SANPAN | AQUAPATIO | XP | MONACO | SWEETWATER | SR



DISCOVER

OUR 2020 LINEUP

LX | SANPAN | AQUAPATIO | XP | MONACO | SWEETWATER | SR

LX	4	SWEETWATER	56
Specifications	6	Cruise Models	58
		Split Bench Models	60
		Lounge Models	62
		Entertainment Models	64
		Center Console Models	66
		Cruise/Fishing Models	68
		4 Point Fishing Models	70
		Styling	72
		Specifications	74
SANPAN	8	SR	78
Cruise Models	10	Cruise Models	80
Split Bench Models	12	Fish Models	82
Windshield Models	14	Specifications	84
Styling	16	Styling	85
Specifications	18		
AQUAPATIO	20	Rails + Canvas + Flooring	86
Cruise Models	22	Sport Arch + Sport Tower	87
Split Bench Models	24	Built to Last	88
Lounge Models	26	Designed for Comfort	89
Entertainment Models	28	Performance Packages	90
Twin Models	30	Floor Plans	92
Windshield Models	32	Gauges + FishFinder/	
Styling	34	Chartplotters	93
Specifications	36	Audio Systems	94
		Full Spectrum RGB Lighting	95
XP	38		
Specifications	40		
MONACO	42		
Cruise Models	44		
Split Bench Models	46		
Lounge Models	48		
Slide Boats	50		
Styling	52		
Specifications	54		

LX

ELEVATE THE EXPERIENCE

Exquisite design, unparalleled performance and the pinnacle of luxury. At just over 28' with 15-passenger capability, the **Godfrey LX** is for those who aspire for more.



LX 2850 ULW—Shown with Golden Bronze Sidewall Accent Color

LX

RAISE THE BAR WITH STYLE



UPSCALE SEATING AND THE FINEST ONBOARD AMENITIES

Designed to bring people together in style, the **LX** is your new high-class hangout on the water. Overflowing with state-of-the-art amenities, intuitive technology, and immaculately crafted comfort, the **LX** looks and performs like something you’ve never seen before.



2850 ULW

LOA/DECK	28' 2"
PONTOON LENGTH	26' 10"
BEAM	8'9"
PONTOON DIAMETER	27"
FUEL CAPACITY (GAL)	45
MAX. HP—STANDARD TRIPLE TUBE HP	425

EXTERIOR SIDEWALL ACCENT COLORS



Shown with Sidewall Accent Color Golden Bronze

A



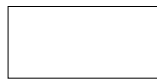
Golden Bronze



Metallic Black Cherry



Metallic Midnight Blue



Metallic Pearl White



FIRST-CLASS UPHOLSTERY



STANDARD ARCH TOWER LIGHT



EXTRA LARGE BOW STORAGE

SOME PHOTOGRAPHY MAY SHOW OPTIONAL EQUIPMENT AVAILABLE AT ADDITIONAL COST. SPECIFICATIONS ARE SUBJECT TO CHANGE.

SANPAN

THE DEFINITION OF BOATING LEISURE IS HERE

The **Godfrey Sanpan** series combines premium finishes, superior craftsmanship and a boating experience unlike any other pontoon.



SP 2600 SBW - Shown with White Arch, Black Rails, Pearl White Smooth Insert, Smooth Charcoal Rail Skins, Carbon Fiber Top Stripe, and Gloss Black Bottom Stripe.



SP 2600 SBW



SP 2600 ULW



SP 2400 ULC



SP 2400 ULC—Shown with Silver Rails, Black Cherry Rail Skins, and Charcoal Smooth Insert.

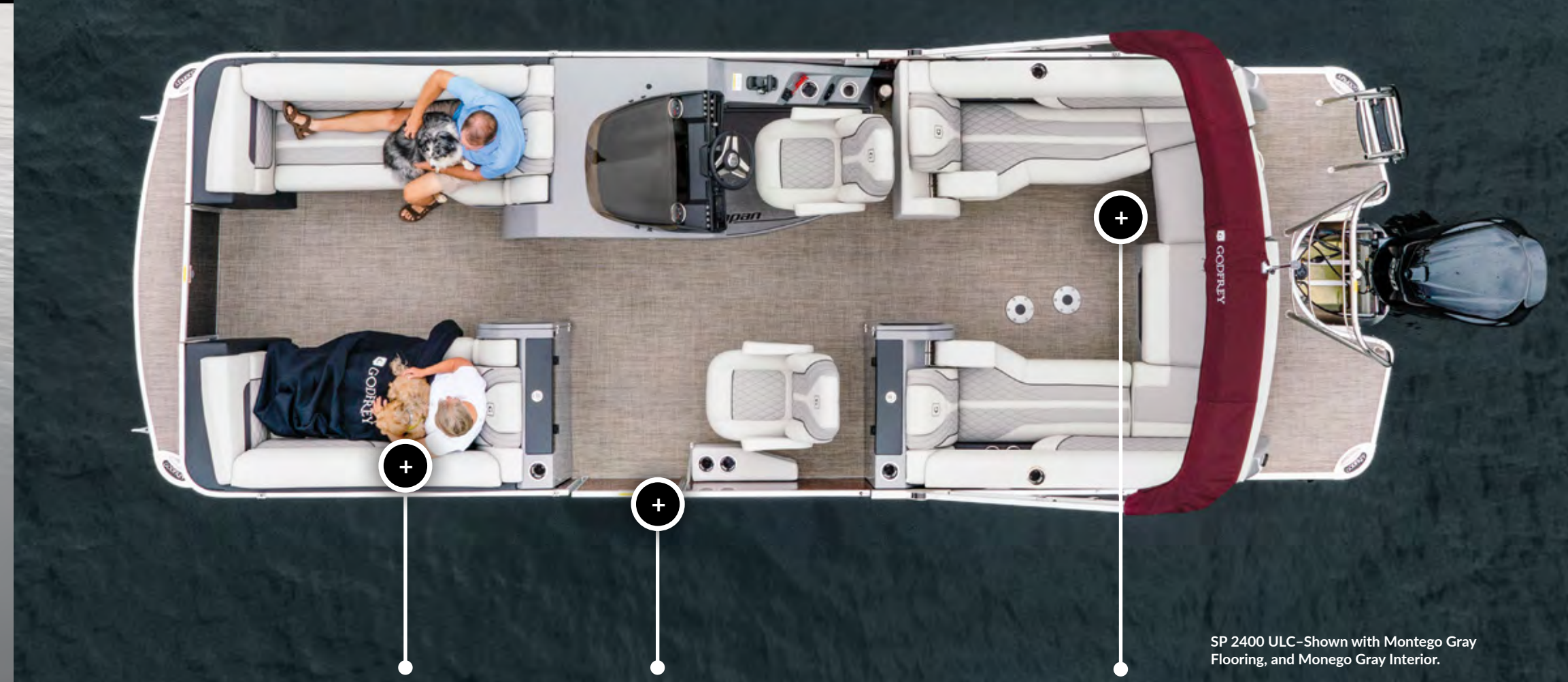
PETS WELCOME

Cruise with your best friend on-board and relax on the **Sanpan Cruise** seating complimented by co-captain's chairs in this open-deck design.



2400 ULC

2600 ULC



SP 2400 ULC—Shown with Montego Gray Flooring, and Monego Gray Interior.



FIRST-CLASS UPHOLSTERY



STANDARD STAINLESS STEEL ACCENTS



UNIQUE STERN ENTRY

SANPAN / SPLIT BENCH MODELS



SP 2600 SBW-Shown with White Arch, Black Rails, Pearl White Smooth Insert, Charcoal Smooth Rail Skins, Carbon Fiber Top Stripe, and Gloss Black Bottom Stripe.



SP 2600 SBW-Shown with Harbor Gray Flooring, and Bayside White interior.

VIP SEATING AVAILABLE

The all-new smooth, dynamic styling and first-class interior with capacity up to 17 people make our **Sanpan Split Bench** models the perfect place to gather with friends.



2400 SBC



2600 SBC



SPLIT BENCH SEATING



FULL SPECTRUM RGB LIGHTING



9" GARMIN DIGITAL GAUGES GX5 HELM



WALK-THRU WINDSHIELD



SP 2600 ULW—Shown with Black Rails, Metallic Black Rail Skins, Metallic Black Smooth Rail Skins Insert, Carbon Fiber Top Stripe, and Lit Graphic.

ELITE SEATING ONLY

Our **Sanpan Windshield** models are available in 3-tube, 28-foot configurations. The integrated full-width windshield with smoked glass and stainless steel accents delivers a premium experience followed by top-of-the-line amenities.



2600 SBW

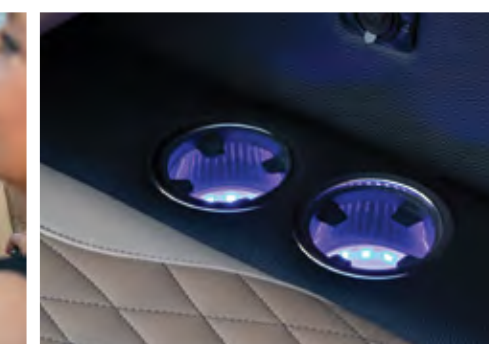
2600 ULW



WALK-THRU
WINDSHIELD



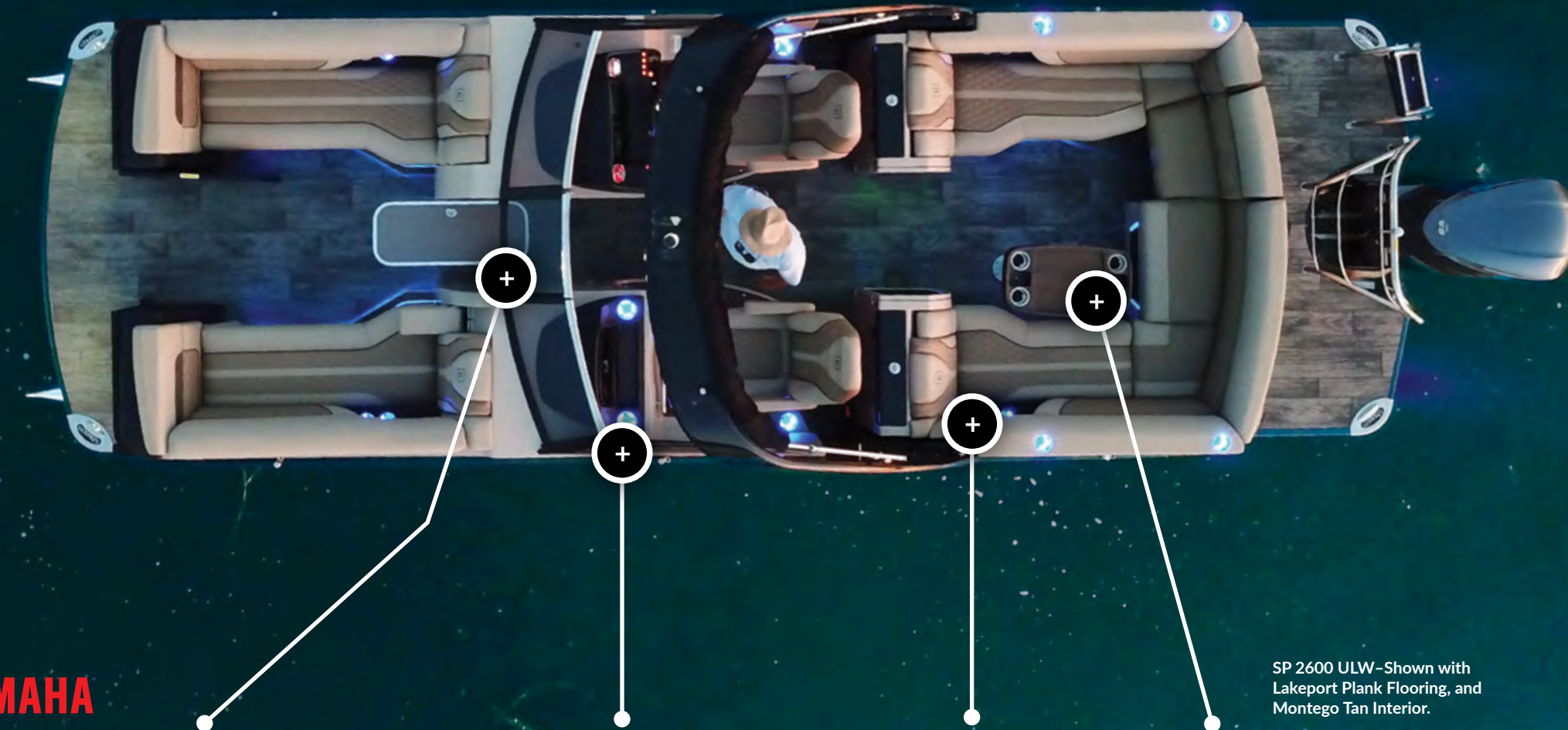
C-ZONE HELM



STAINLESS STEEL RGB
LIT CUP HOLDERS



OPTIONAL RECTANGLE
STERN TABLE

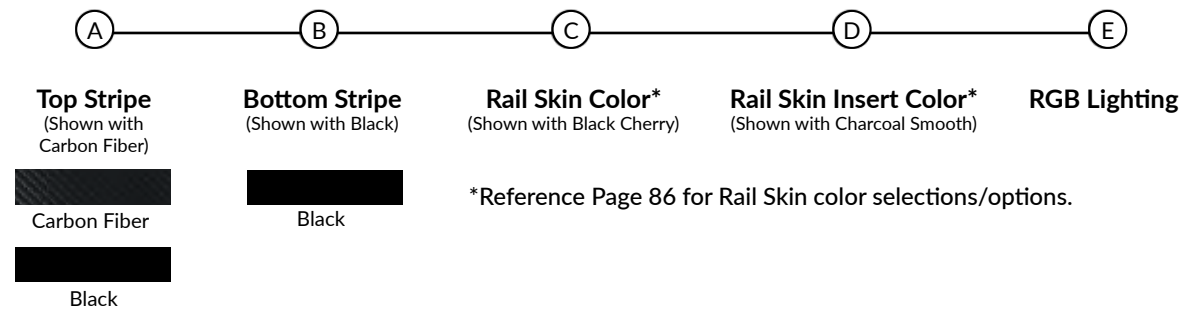
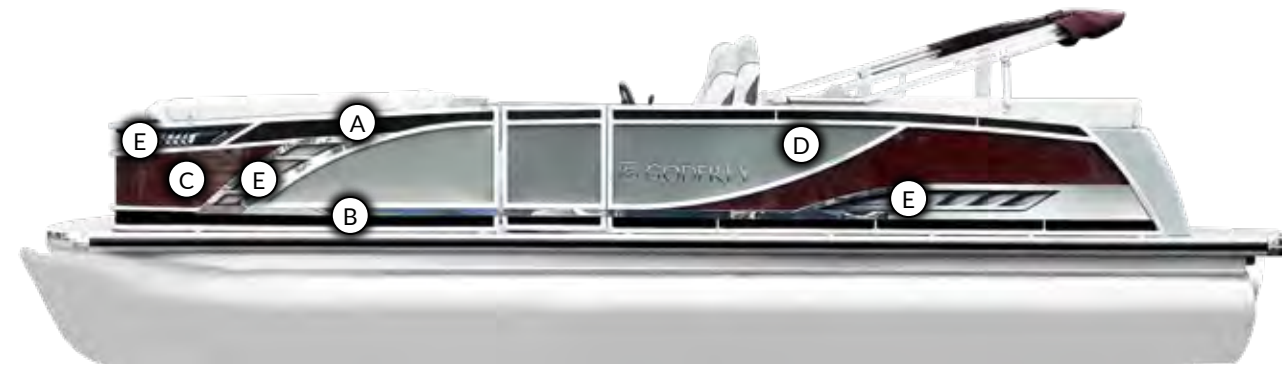


SP 2600 ULW—Shown with
Lakeport Plank Flooring, and
Montego Tan Interior.

FURNITURE COLORS



GRAPHICS



SIGNATURE SERIES: BLACK TIE



Carbon Fiber Top Stripe, Black Bottom Stripe, Rail Skin Insert Color -Black Metallic Smooth
Shown with Metallic Pearl White Rail Skins & Midnight Package

Shown in Montego Tan



OPTIONAL RECTANGLE TABLE



CANVAS AVAILABLE FOR SPORT ARCH



FUSION APOLLO STEREO



HDX DRYFINS



STANDARD INTERIOR RGB LIGHTING



BOW COOLER



GX5 TOUCHSCREEN
RGB CONTROLLER & STEREO HEAD UNIT



QUICK RELEASE FENDER LOCKS



STANDARD EXTERIOR RGB LIGHTING

SANPAN

SPECIFICATIONS



	2400 SBC	2400 ULC	2600 SBC
LOA/DECK	25' 10" / 23' 6"	25' 10" / 23' 6"	28' 2"
PONTOON LENGTH	24' 2"	24' 2"	26' 6"
BEAM	8' 6"	8' 6"	8' 6"
PONTOON DIAMETER	25"	25"	25"
FUEL CAPACITY (GAL)	30	30	30

	25" 2 Tube (Standard)		27" 2 Tube		25" Sport Tube	
	Per. Cap.	Max HP	Per. Cap.	Max HP	Per. Cap.	Max HP
2400	14	150	16	150	15	150
2600	12	150	15	150	15	150

2600 ULC	2600 SBW	2600 ULW
28' 2"	28' 2"	28' 2"
26' 6"	26' 6"	26' 6"
8' 6"	8' 6"	8' 6"
25"	27" (TT std)	27" (TT std)
30	45	45

27" Sport Tube		25" GTP Triple Tube		27" GTP Triple Tube	
Per. Cap.	Max HP	Per. Cap.	Max HP	Per. Cap.	Max HP
17	150	15	300	16	400
18	150	15	425	17	425

AQUAPATIO



AP 2810 SB Twin Engine—Shown with Black Rails, Black Arch, Black Rail Skins and Caramel Graphics.



AP 235 UL—Shown with Black Rails, Metallic Navy Rail Skins, and Caramel Top-only Graphics.

PASSING ON THE WATER GENE

The **Godfrey AquaPatio** series continues its legacy of the most durable pontoon built for life on the water. The **Godfrey AquaPatio** stands the test of time with its quality construction, and intuitive design.



AP 255 SFL—Shown with Black Rails, Metallic Bronze Rail Skins, and Caramel Graphics.

AQUAPATIO CRUISE MODELS



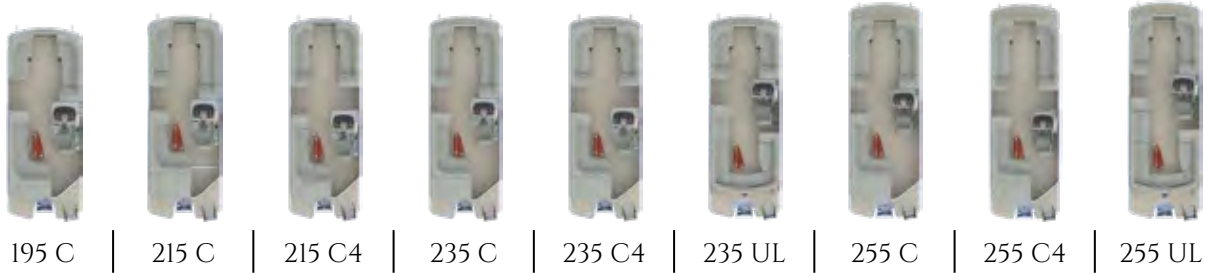
AP 235 C–Shown with Black Rails, Charcoal Rail Skins and kiwi green Top and Carbon Fiber Bottom Graphics.



AP 235 C–Shown with Slate interior and kiwi green accents.

SIT BACK AND ENJOY THE RIDE

Spanning deck lengths from 20 to 26-feet, our **AquaPatio Cruise** models blend sport performance with space and seating configurations, perfect for connecting with others.



STAINLESS STEEL EASY CLIMB LADDER



STERN L-SHAPED COUCH



WOOD-GRAIN TABLE



CHAISE STORAGE



AP 235 SB — Shown with Midnight Package, Metallic Black Rail Skins and Top-only Caramel Graphics.

FLAWLESS AND SEAMLESS RIDE

Spacious and comfortable, our **AquaPatio Split Bench** models are available in 22 to 26-foot lengths with plentiful seating, and an open center-deck from bow to stern.



215 SB

235 SB

255 SB



AP 235 SB — Shown with Caramel interior.



STERN SEATS



CAPTAIN'S CHAIR



GAS-SHOCK-ASSIST SPORT TOWER



BOW LOUNGE



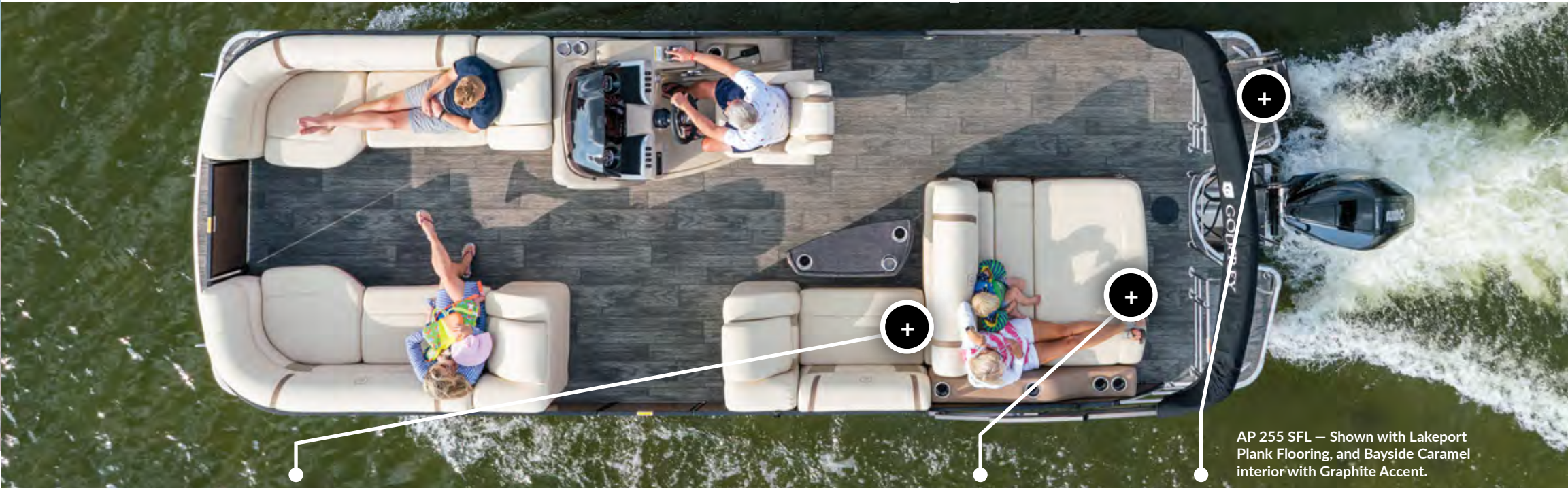
AP 259 DFL — Shown with Black Rails, Metallic Bronze Rail Skins and Top-only Caramel Graphics.

ENJOY A DAY IN
COMFORT AND STYLE

A variety of seating and lounging capabilities allow you to chill during the heat of the day, and cruise the sunset after. Choose from 24-foot, 12-passenger to 26-foot 18-passenger **AquaPatio Lounge** models.



| 235 DFL | 235 EL | 235 RL | 235 SFL | 255 RL | 255 RLH | 255 SFL | 259 EL | 259 DFL |



AP 255 SFL — Shown with Lakeport Plank Flooring, and Bayside Caramel interior with Graphite Accent.



FORWARD FACING SINGLE FLIP LOUNGE



FLIP LOUNGE STORAGE



STAINLESS STEEL WRAP
AROUND SAFETY BARRIER



AP 255 SD — Shown with Black Rails, Vapor Blue Rail Skins and Ice graphics.

ENGINEERED TO ENTERTAIN
ON THE WATER

The Slide Boats feature a water slide, upper sun deck and center walk-thru design in split bench or mid-ship bar configurations. The Bar Models feature a multitude of bar, table and seating options, along with audio upgrades to ensure that our **AquaPatio Entertainment** models live up to its namesake.



| 235 SD | 235 SDB | 255 SD | 255 SDB | 259 CBD |



AP 255 SD — Shown with sport white interior with vapor blue accent.



CENTER BAR



CANOPY AVAILABLE IN MULTIPLE COLORS



SUNPAD AND SLIDE



AP 2810 SB Twin Engine—Shown with Black Rails, Black Arch, Black Rail Skins and Caramel Graphics.



AP 2810 SB Twin Engine—
Shown with Paja Beige Flooring and
Sahara Tan interior with Quilting.

THE NEXT LEVEL OF PERFORMANCE

The **AquaPatio Twin Engine** delivers some serious horsepower. Connect during an afternoon of adventure and make lasting memories. The twin engine performs at an outstanding speed and seamless ride.



2810 SB TWIN



2810 SBW TWIN



GX5 TOUCHSCREEN
RGB CONTROLLER &
STEREO HEAD UNIT



CO-CAPTAIN CHAIR



TWIN ENGINES



AP 259 SBW—Shown with Black Rails, White Arch, Charcoal Rail Skins, and Ice Graphics.

STYLISH HELM AND
CO-CAPTAIN’S QUARTERS
OVERLOOK THE HORIZON

All the elegance and all the sport of a sleek wrap-around
AquaPatio Windshield model with walk-thru center access
available in 26’ 10” triple-tube configurations.



| 259 DFLW | 259 ELW | 259 RLW | 259 SBW | 259 ULW |



AP 259 RLW—Shown with Lunar Gray interior.



REAR-LOUNGE (RL) SEATING



C-ZONE HELM WITH FULL-WRAP WINDSHIELD

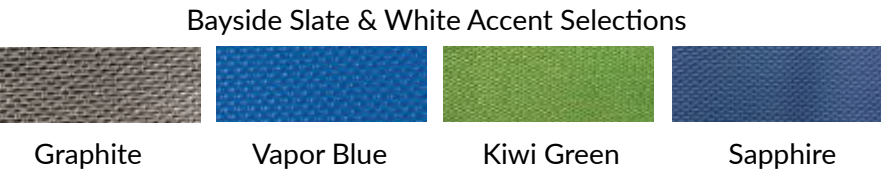
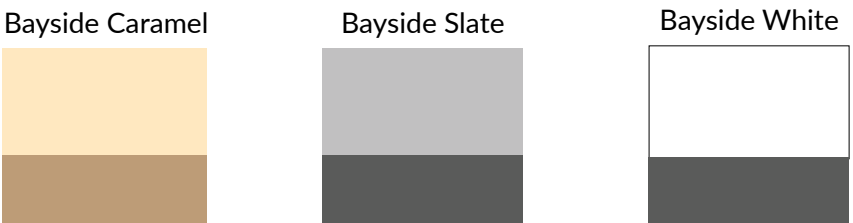
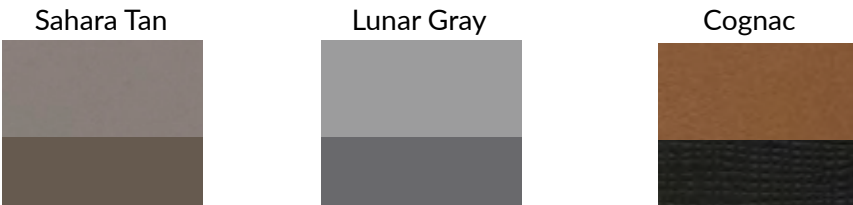


WALK-THRU WINDSHIELD



D-SEATING OPTION

FURNITURE COLORS



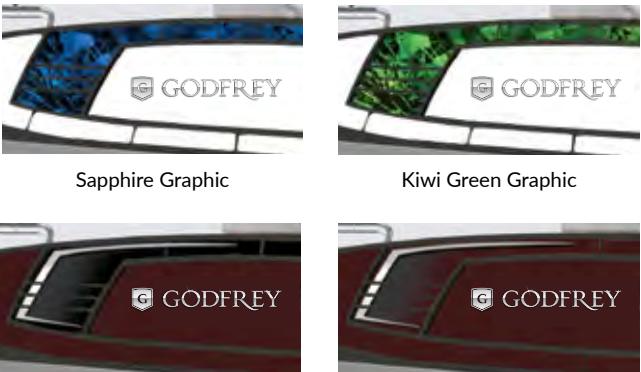
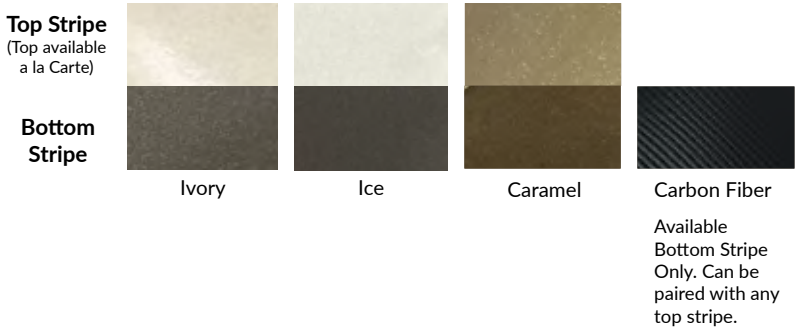
Cognac

Bayside White
Shown with optional Quilted Accent Panels and Vapor Blue Accent Color

GRAPHICS



- (A) Black Rails
- (B) Metallic Navy Rail Skins*
- (C) Ivory Graphics Package



Sapphire Graphic

Kiwi Green Graphic

Black Grill Graphic

Clear Grill Graphic

*Reference Page 86 for Rail Skin color selections/options.



SKI TOW BAR



STANDARD HELM PLATFORM



LIVING ROOM STYLE FURNITURE



TWIN ENGINE



SIMRAD FISH FINDER



STANDARD TABLE WITH CUPHOLDERS



OPTIONAL GRAPHICS



ARCH TOWER



OPTIONAL RECTANGLE TABLE WITH CUPHOLDERS

AQUAPATIO / SPECIFICATIONS



	195 C	215 C	215 C4	215 SB	235 C	235 C4	235 DFL	235 EL	235 RL	235 SB	235 SD*	235 SDB*
LOA/DECK	20' / 17' 6"	22' / 19' 6"	22' / 19' 6"	22' / 19' 6"	24' / 21' 6"	24' / 21' 6"	24' / 21' 6"	24' / 21' 6"	24' / 21' 6"	24' / 21' 6"	25' / 21' 6"	25' / 21' 6"
PONTOON LENGTH	18' 4"	20' 4"	20' 4"	20' 4"	22' 4"	22' 4"	22' 4"	22' 4"	22' 4"	22' 4"	22' 4"	22' 4"
BEAM	8' 6"	8' 6"	8' 6"	8' 6"	8' 6"	8' 6"	8' 6"	8' 6"	8' 6"	8' 6"	8' 6"	8' 6"
PONTOON DIAMETER	25"	25"	25"	25"	25"	25"	25"	27"	25" (TT std)	25"	27" (TT std)	27" (TT std)
FUEL CAPACITY (GAL)	30	30	30	30	30	30	30	30	30	30	45	45



235 SFL	235 UL	255 C	255 C4	255 RL	255 RLH	255 SB	255 SD*	255 SDB*	255 SFL	255 UL	259 CBD	259 DFL	259 EL
24' / 21' 6"	24' / 21' 6"	25' 10" / 23' 6"	25' 10" / 23' 6"	25' 10" / 23' 6"	25' 10" / 23' 6"	25' 10" / 23' 6"	26' 10" / 23' 6"	26' 10" / 23' 6"	25' 10" / 23' 6"	25' 10" / 23' 6"	26' 10" / 24' 6"	26' 10" / 24' 6"	26' 10" / 24' 6"
22' 4"	22' 4"	24' 2"	24' 2"	24' 2"	24' 2"	24' 2"	24' 2"	24' 2"	24' 2"	24' 2"	25' 2"	25' 2"	25' 2"
8' 6"	8' 6"	8' 6"	8' 6"	8' 6"	8' 6"	8' 6"	8' 6"	8' 6"	8' 6"	8' 6"	8' 6"	8' 6"	8' 6"
25"	25"	25"	25"	25"	25"	25"	27" (2 tube)	27" (2 tube)	25"	25"	25"	25"	27" (TT std)
30	30	30	30	30	30	30	30	30	30	30	30	30	30

*SD Overall height: 10' 10"



	259 DFLW	259 ELW	259 RLW	259 SBW	259 ULW	2810 SB TWIN	2810 SBW TWIN
LOA/DECK	26' 10" / 24' 6"	26' 10" / 24' 6"	26' 10" / 24' 6"	26' 10" / 24' 6"	26' 10" / 24' 6"	28' 2" / 28'	28' 2" / 28'
PONTOON LENGTH	25' 2"	25' 2"	25' 2"	25' 2"	25' 2"	26' 6"	26' 6"
BEAM	8' 6"	8' 6"	8' 6"	8' 6"	8' 6"	10'	10'
PONTOON DIAMETER	27" (TT)	27" (TT)	27" (TT)	27" (TT)	27" (TT)	27" (TT)	27" (TT)
FUEL CAPACITY (GAL)	16	16	16	16	16	13	13
	400	400	400	400	400	600	600
	45	45	45	45	45	124	124

	25" 2 Tube (Standard)		27" 2 Tube		25" Sport Tube		27" Sport Tube		25" GTP Triple Tube		27" GTP Triple Tube	
	Per. Cap.	Max HP	Per. Cap.	Max HP	Per. Cap.	Max HP	Per. Cap.	Max HP	Per. Cap.	Max HP	Per. Cap.	Max HP
195	10	75	11	90	10	105	11	115	10	115	12	115
215	11	150	12	150	11	150	13	150	12	200	14	200
235	12	150	14	150	15	150	15	150	15	300	16	300
255	14	150	16	150	15	150	17	150	15	300	16	400
259	15	150	17	150	16	150	18	150	15	350	16	425

XP

MODERN INTERPRETATION OF A SPORT PONTOON

The **XP** is an extreme pontoon experience with swift, sophisticated handling and our exclusive 27" Ultramax triple-tube package.



XP 250—Shown with Silver Rails and White Exterior with Harbor Blue Graphics.





WHITE OPTION

Shown with white interior, white exterior (Fiberglass & Rail Skins), White Tower (Gray Canvas) and Silver Rails.



BLACK OPTION

Shown with white interior, black exterior (Fiberglass & Rail Skins), Black Tower (Gray Canvas) and Black Rails.

Unique and stylized composite glass bow enclosure is complemented by a sweeping arched side-rail that features exposed aluminum framework, color-matched in your choice of black or, new for 2020, pure white finish.

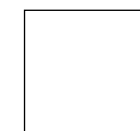
You won't find traditional bench seats in the **Godfrey XP**, we've rethought what a pontoon can be by giving you bucket mounted stern seating so you can catch all the action.



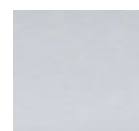
250 XP

LOA/DECK	26'-10"
PONTOON LENGTH	25' 6"
BEAM	8' 6"
PONTOON DIAMETER	27" (TT std)
FUEL CAPACITY (GAL)	45
MAX. HP - TRIPLE TUBE GTP	425

VINYL COLORS



White



Gravel



Kiwi Green



Harbor Blue



Merlot

GRAPHICS



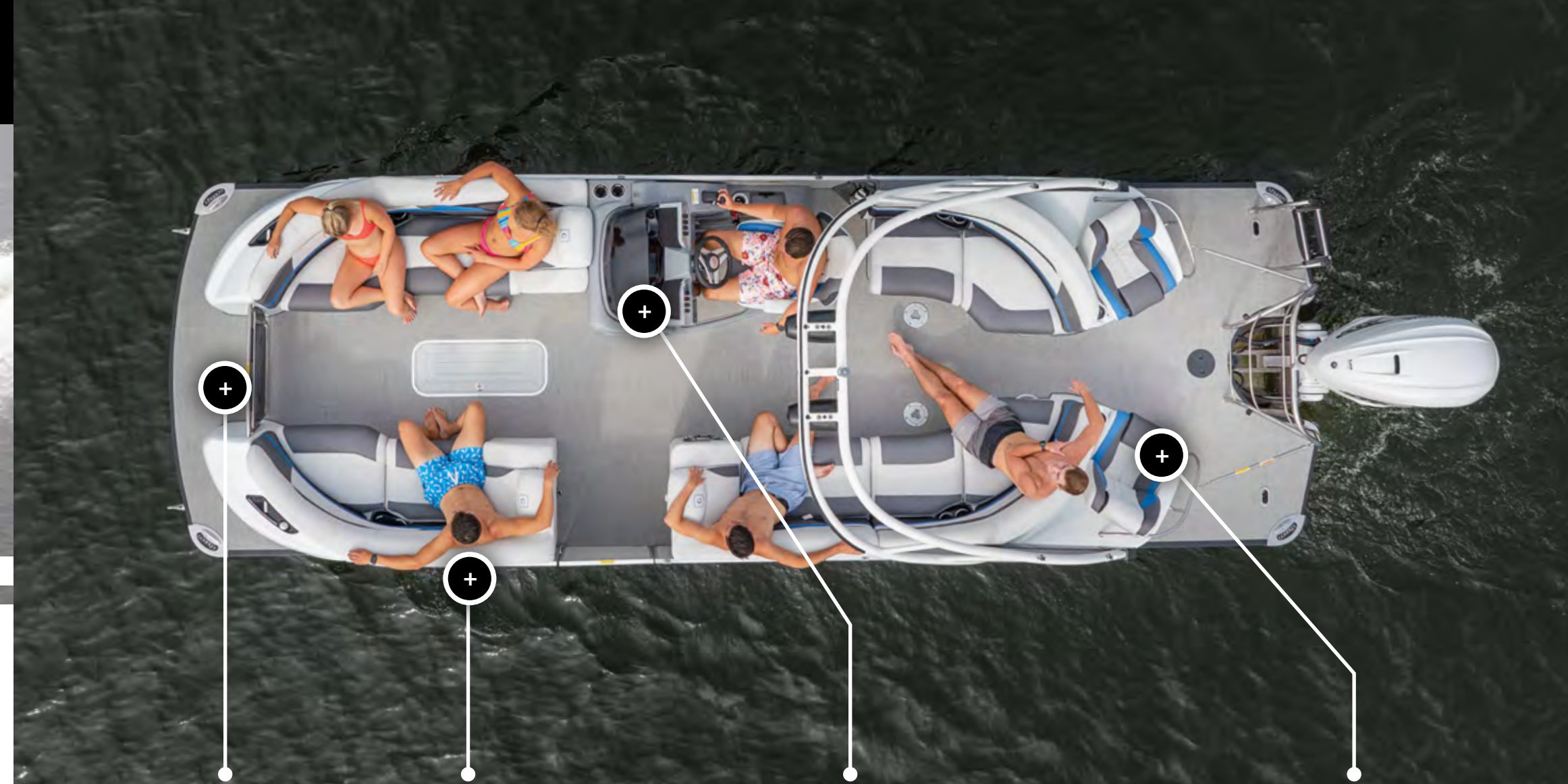
Kiwi Green



Harbor Blue



Merlot



SPORT GATE DESIGN



BOW LOUNGERS



STANDARD HELM



BUCKET MOUNTED STERN SEATING

MONACO



MC 255 RL-Shown with Black Rails, Charcoal Rail Skins Insert and Slate Top Stripe Package.



MC 235 SFL

ELEVATE YOUR DAYS ON THE WATER

The latest addition to the family, the **Godfrey Monaco** series comes with enticing style ideal for a relaxing day on the water with family and friends.



MC 235 C



MC 235 SFL



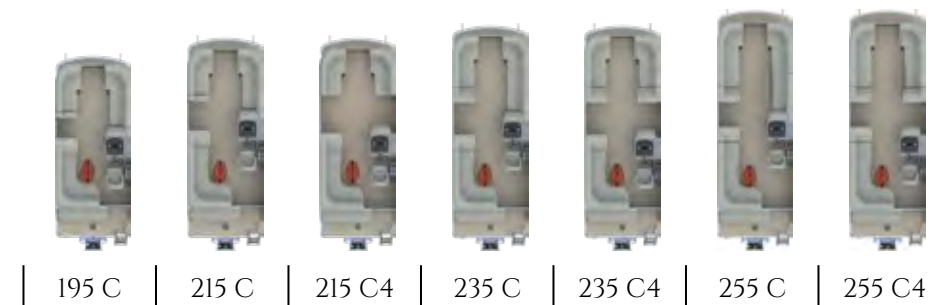
MC 235 C- Shown with Black Rails, Vapor Blue Rail Skins with Pearl White Top Stripe with Silver Bottom Stripe.



MC 235 C- Shown with Lattice Slate Flooring, and Slate interior.

VERSATILE AND STYLISH

Monaco Cruise models offer a walkable stern platform featuring a unique Toybox storage compartment, Large enough for all the toys a day on the water demands.



| 195 C | 215 C | 215 C4 | 235 C | 235 C4 | 255 C | 255 C4 |



OPTIONAL CHANGING ROOM



ULTRA 25" AND ULTRAMAX 27" TUBES



FULL ENCLOSURE AVAILABLE



TOY BOX

MONACO

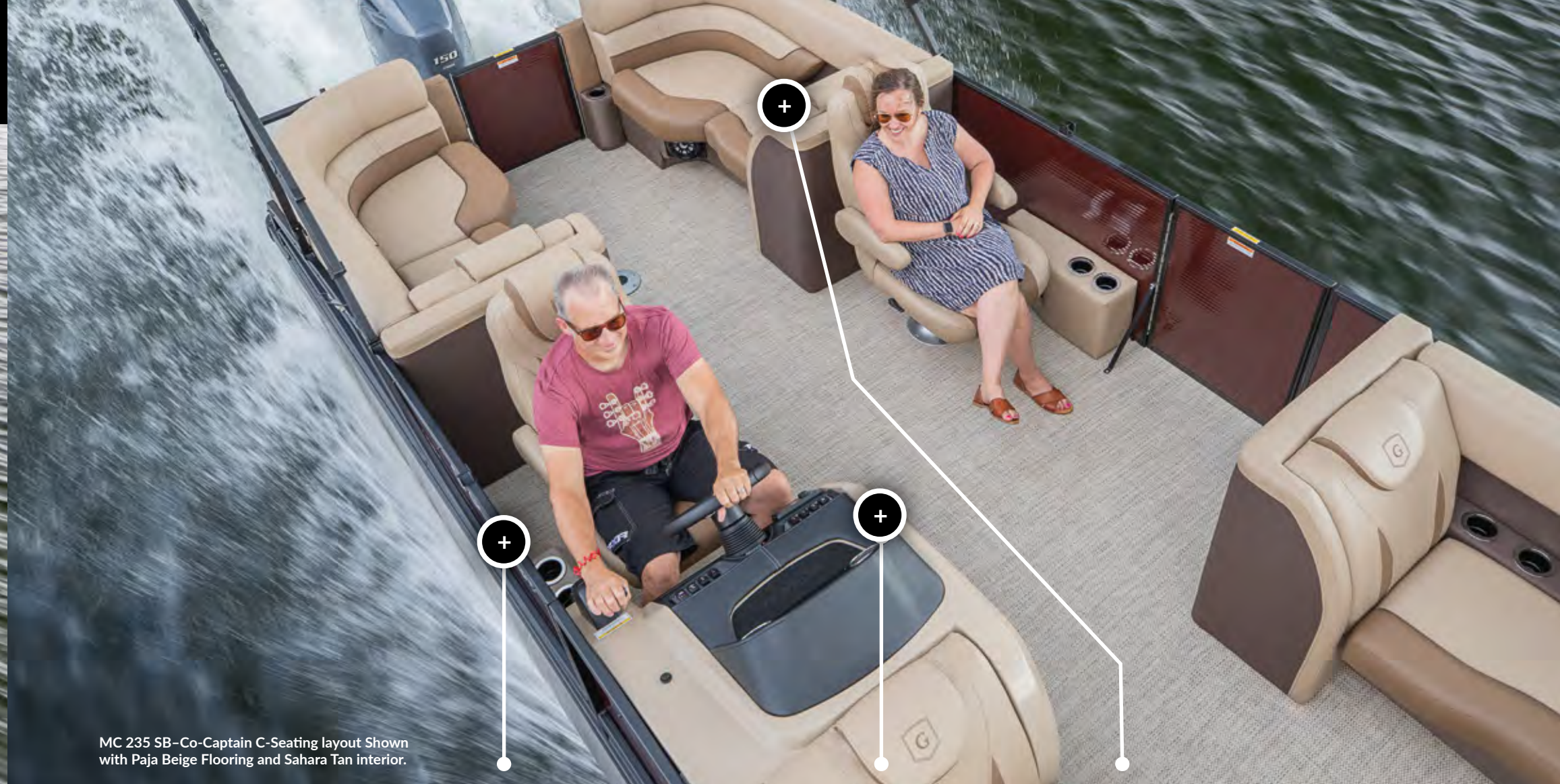
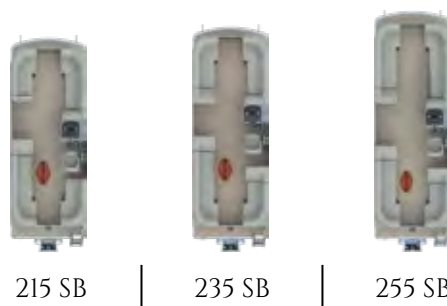
SPLIT BENCH MODELS



MC 235 SB—Shown with Black Rails, Metallic Black Cherry Rail Skins with Top and Bottom Caramel Graphics Package.

ALL DAY LOUNGING INCLUDED

Expansive and versatile seating configurations of the **Monaco Split Bench** models are available in lengths from 21 to 25-feet with the ability to accommodate up to 16 passengers.



MC 235 SB—Co-Captain C-Seating layout Shown with Paja Beige Flooring and Sahara Tan interior.



HELM FOOT REST



LARGE HELM STORAGE



TABLE STORAGE



MC 255 RL—Shown with Black Rails, Charcoal Rail Skins, and Charcoal Smooth Rail Skins Insert with Slate Top Band Package.

SUNRISE AND SUNSETS INCLUDED

Sometimes the best days on the water with family and friends are when you do nothing at all. Relax and stretch out with a **Monaco Lounge** model in 23 and 25-foot lengths.



| 235 RL | 235 SFL | 255 RL | 255 RLH | 255 SFL |



MC 235 SFL—Shown with Lattice Caramel Flooring, and Caramel interior with quilting.



STAINLESS STEEL GATE AND BARRIER



OPTIONAL TOY BOX



REAR LOUNGE SEATING
(Shown on a MC 255 RL Model)



HAVE FUN IN STYLE

Simply too much fun for one, spend a day making memories with our one-of-a-kind **Monaco Sundeck** models. Features a center walk-thru design, robust upper deck structure, and rear water slide.



| 235 SD | 235 SDB | 255 SD | 255 SDB |



SIMRAD FISH FINDER



LARGE SUNDECK WITH AMPLE DECK SPACE

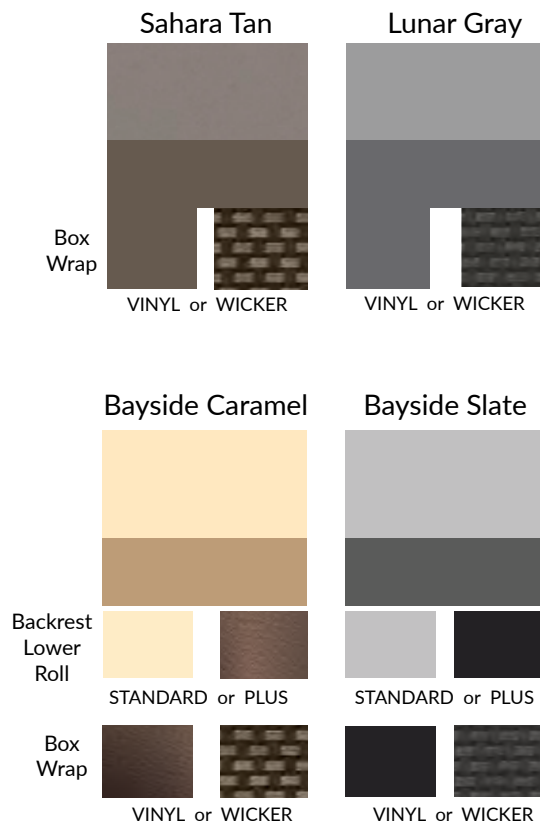


SPLIT BENCH SEATING

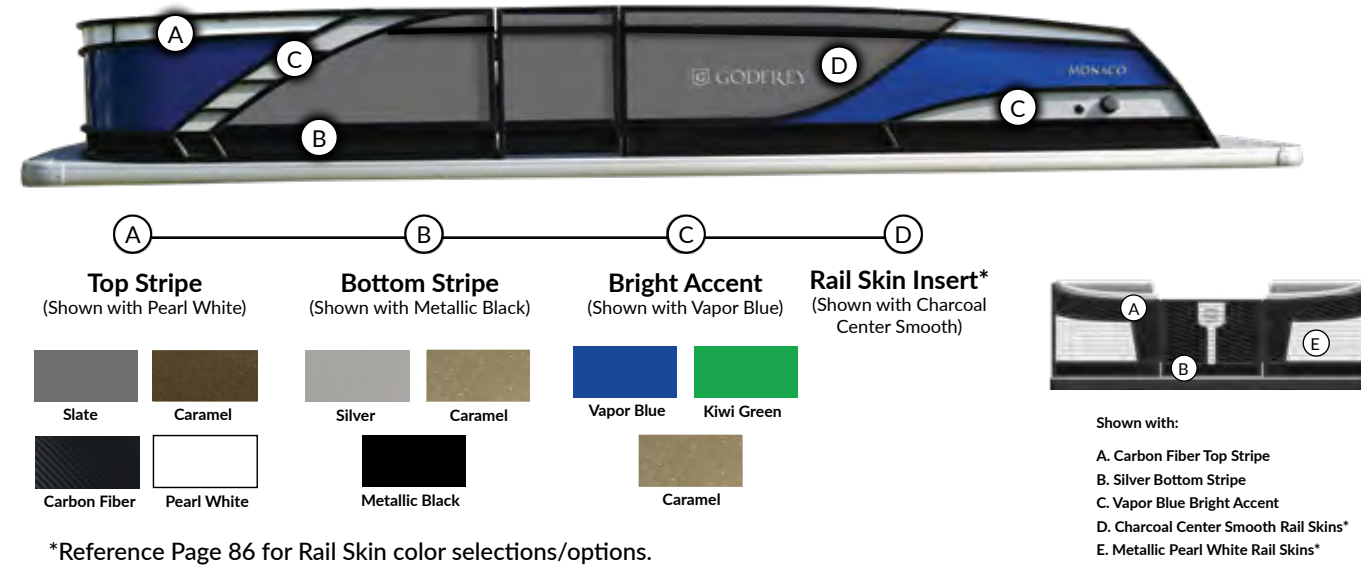


SUNPAD AND SLIDE

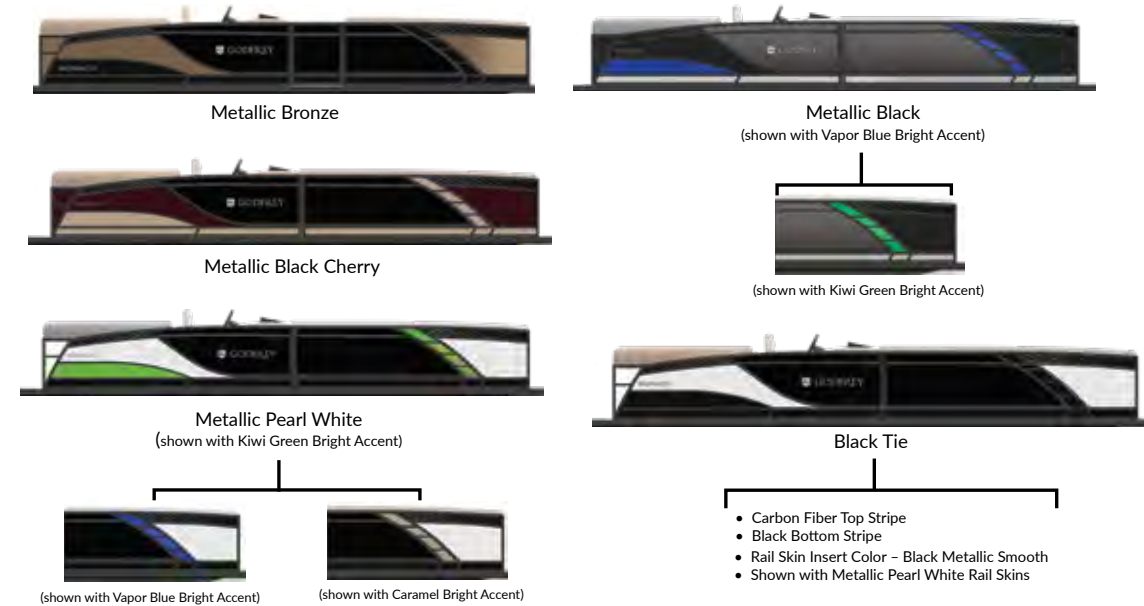
FURNITURE COLORS



GRAPHICS



SIGNATURE SERIES



BUILT -IN FOOT REST



TOY BOX



RGB LIGHTING CONTROLS



TABLE STORAGE



LARGE STORAGE UNDER SEAT CUSHIONS



OPTIONAL WINDSCREEN



OPTIONAL QUILTING



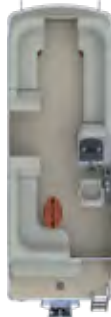
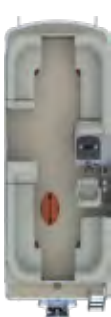
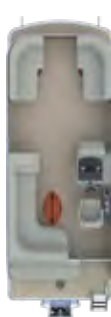
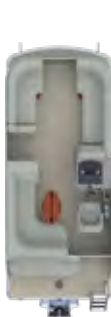
FUSION STEREO



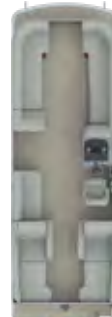
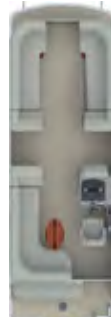
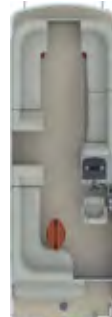
RAISED HELM

MONACO

SPECIFICATIONS

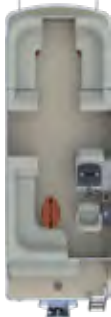


	195 C	215 C	215 C4	215 SB	235 C
LOA/DECK	19' 10" / 18'	21' 10" / 20'	21' 10" / 20'	21' 10" / 20'	23' 10" / 22'
PONTOON LENGTH	18' 4"	20' 4"	20' 4"	20' 4"	22' 4"
BEAM	8' 6"	8' 6"	8' 6"	8' 6"	8' 6"
PONTOON DIAMETER	25"	25"	25"	25"	25"
FUEL CAPACITY (GAL)	30	30	30	30	30

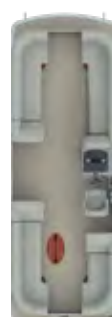


	235 SFL	255 C	255 C4	255 RL	255 RLH
LOA/DECK	23' 10" / 22'	25' 8" / 24'	25' 8" / 24'	25' 8" / 24'	25' 8" / 24'
PONTOON LENGTH	22' 4"	24' 2"	24' 2"	24' 2"	24' 2"
BEAM	8' 6"	8' 6"	8' 6"	8' 6"	8' 6"
PONTOON DIAMETER	25"	25"	25"	25"	25"
FUEL CAPACITY (GAL)	30	30	30	30	30

	25" 2 Tube (Standard)		27" 2 Tube		25" Sport Tube		27" Sport Tube		25" GTP Triple Tube		27" GTP Triple Tube	
	Per. Cap.	Max HP	Per. Cap.	Max HP	Per. Cap.	Max HP	Per. Cap.	Max HP	Per. Cap.	Max HP	Per. Cap.	Max HP
195	10	75	11	90	10	105	11	115	10	115	12	115
215	11	150	12	150	11	150	13	150	12	200	13	200



235 C4	235 RL	235 SB	235 SD*	235 SDB*
23' 10" / 22'	23' 10" / 22'	23' 10" / 22'	25' / 21' 6"	25' / 21' 6"
22' 4"	22' 4"	22' 4"	22' 4"	22' 4"
8' 6"	8' 6"	8' 6"	8' 6"	8' 6"
25"	25"	25"	27" (TT std)	27" (TT std)
30	30	30	45	45



255 SB	255 SD*	255 SDB*	255 SFL
25' 8" / 24'	26' 10" / 23' 6"	26' 10" / 23' 6"	25' 8" / 24'
24' 2"	24' 2"	24' 2"	24' 2"
8' 6"	8' 6"	8' 6"	8' 6"
25"	27" (2 tube)	27" (2 tube)	25"
30	30	30	30

*SD Overall height: 10' 10"

	25" 2 Tube (Standard)		27" 2 Tube		25" Sport Tube		27" Sport Tube		25" GTP Triple Tube		27" GTP Triple Tube	
	Per. Cap.	Max HP	Per. Cap.	Max HP	Per. Cap.	Max HP	Per. Cap.	Max HP	Per. Cap.	Max HP	Per. Cap.	Max HP
235	12	150	14	150	15	150	15	150	15	300	15	300
255	14	150	16	150	15	150	17	150	15	300	16	400

SWEET WATER

UNBELIEVABLE VERSATILITY

Godfrey Sweetwater pontoons offer a life-changing experience. Filled with the high-quality features and alluring amenities you would normally find on more expensive boats. These action-packed pontoons are perfect for any family who wants to spend time together on the water.



SW 2286 MT - Shown with Black Rails, and Metallic Black Cherry Rail Skins.

SW 2286 C - Shown with Black Rails and Metallic Navy Rail Skins.



SW 2086 F



SW 2286 FS - Shown with Black Rails and Metallic Bronze Rail Skins,



SW 2286 SFL

SWEETWATER CRUISE MODELS



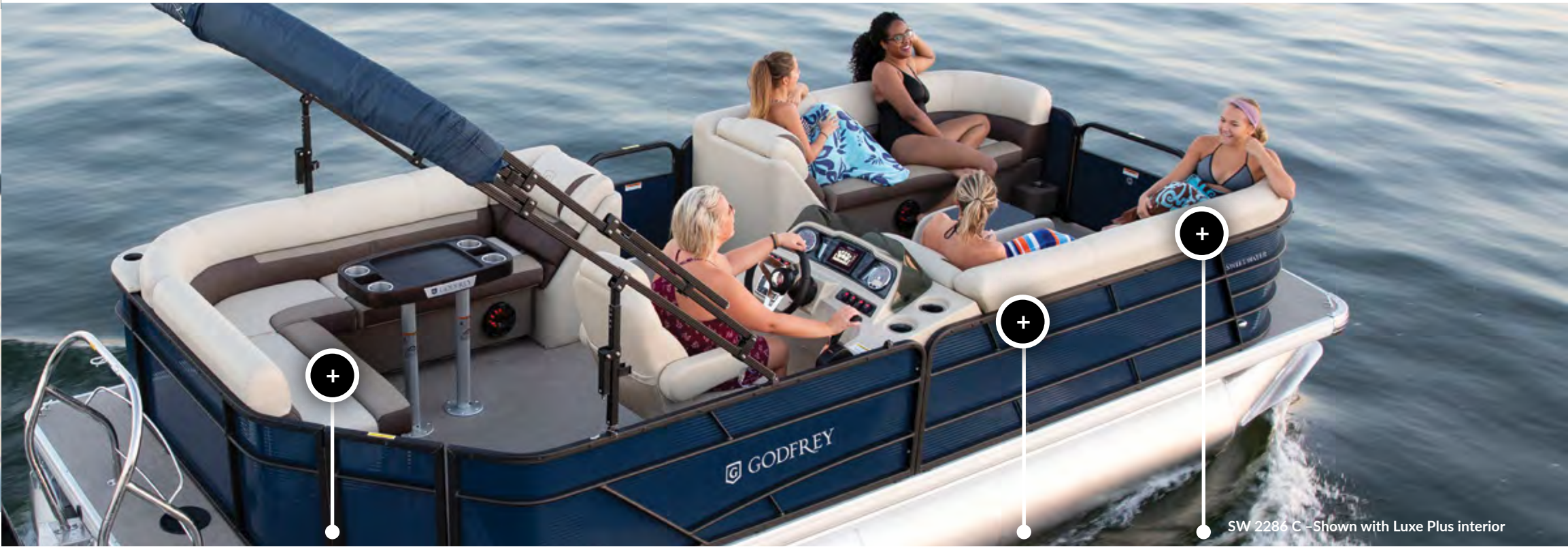
SW 2286 C - Shown with Black Rails, and Metallic Navy Rail Skins.

PUT DOWN THE WELCOME MAT AND KICK OFF YOUR SHOES

Everything about a **Sweetwater Cruise** feels right. Available in 18 to 23-foot lengths with nearly unlimited customization options.



| 1886 C | 2086 C | 2186 C | 2186 C4 | 2186 C4H | 2286 C | 2386 C | 2386 C4 | 2486 C |



SW 2286 C - Shown with Luxe Plus interior



LUXE PLUS SEATING VINYL AVAILABLE



C4-4TH GATE DOOR



EVERLAST STITCHING

SWEETWATER / SPLIT-BENCH MODELS



SW 2286 SB-Shown with Black Rails, and Metallic Vapor Blue Rail Skins.



SW 2286 SB -Shown with Select Gray interior and Vapor Blue Accent.

TREAT YOUR FRIENDS AND FAMILY TO COMPLETE COMFORT

The **Sweetwater Split-Bench** models offer large, inviting stern and bow bench seating featuring upscale amenities and plush furniture.



| 2086 SB | 2186 SB | 2286 SB | 2386 SB | 2386 SBH | 2486 SB |



SELF DRAINING STORAGE UNDER THE SEAT CUSHIONS



POWER CANOPY



SPLIT BENCH SEATING



SW 2286 SFL — Shown with Silver Rails and Metallic Black Rail Skins.

FOCUSED AND PURPOSEFULLY – BUILT

The **Sweetwater Lounge** model extends the best days of boating with versatility, comfort and features tailor-made for relaxation in 22 and 24-foot lengths.



| 2286 SFL | 2486 SFL |



SW 2286 SFL — Shown with Luxe Slate interior and Pearl White Accent.



STANDARD ROUND TABLE



CONVERTIBLE SINGLE FLIP LOUNGE (BOW FACING)



SINGLE FLIP LOUNGE (STERN FACING) WITH STAINLESS STEEL SAFETY BARRIER

SWEET WATER ENTERTAINMENT MODELS



SW 2486 DT-Shown with Silver Rails, Navy Rail Skins, and Pearl White Graphics.

ALFRESCO DINING AVAILABLE

Chart a course for laughter and good times with friends and family aboard the **Sweetwater Entertainment** model featuring an ideal combination of lounge seating, wet bar and table options in 21 to 24-foot lengths.



| 2186 MT | 2286 MT | 2386 DT | 2386 MT | 2486 DT |



SW 2486 DT-Shown with Harbor Gray Flooring, and Slate interior with Navy Accent.



REFRESHMENT CENTER



DINETTE TABLE



FULL-SIZE SUNPAD

SWEETWATER CENTER CONSOLE FISHING MODELS



SW 2286 CC — Shown with Black Rails and Metallic Black Rail Skins.

FIT FOR ADVENTURES

Whether you're fishing with friends or enjoying time with family, our **Sweetwater Center Console Fishing** model always put you in control. Available in 22, 23, and 24-foot lengths.



| 2286 CC | 2386 CC | 2486 CC |



SW 2286 CC — Shown with Tan interior.



PLANO RACK SYSTEM



MULTIPLE ROD HOLDERS



LARGE CENTER CONSOLE HELM



STERN FISH CENTER



SW 2286 FS—Shown with Black Rails and Metallic Bronze Rail Skins.



SW 2286 FS—Shown with Luxe Caramel interior and Carbon accent.

TURN ON THE
BOAT PLAYLIST

When it comes to the **Sweetwater Cruise** and **Fish** models there really is no wrong answer when pursuing your passion. Ready for fishing and fun in a variety of floor-plans and lengths from 20 to 23-feet.



| 2086 BF | 2086 FP | 2186 FP | 2186 FS | 2286 BF | 2286 FP | 2286 FS | 2386 FS |



LOCKABLE ROD HOLDER



STERN FISH SEATS

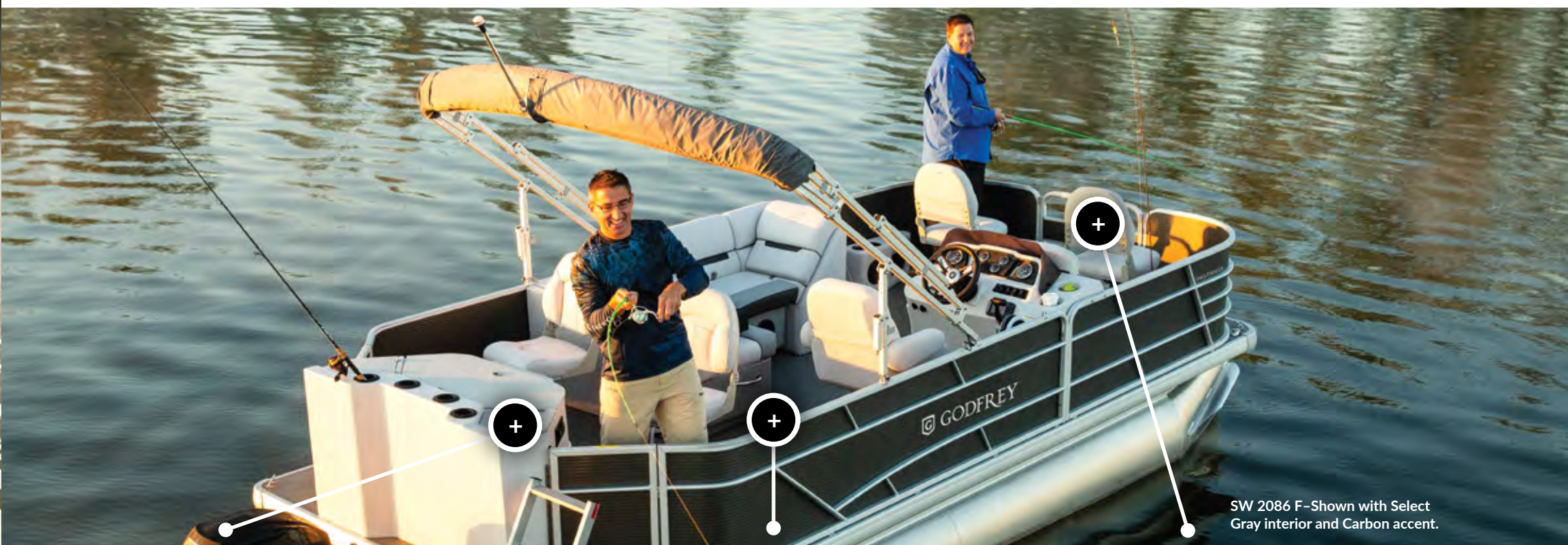


WASHDOWN

SWEETWATER / TRADITIONAL 4-POINT FISHING MODELS



SW 2086 F - Shown with Silver Rails and Charcoal Rail Skins.



SW 2086 F - Shown with Select Gray interior and Carbon accent.

FULFILL YOUR PASSION FOR FISHING

The **Sweetwater Traditional 4-Point Fishing** model combines the treasured gift of family and fishing in a pontoon where versatility, value and long-lasting quality come together in your choice of 20 to 22-foot lengths.



2086 F

2186 F

2286 F



WASH DOWN



LOCKABLE ROD HOLDER



BOWFISH SEATS

FURNITURE COLORS

ACCENT COLORS

GRAPHICS



ADDITIONAL CUPHOLDERS AVAILABLE



MULTI- FUNCTION GPS GAUGES



PHONE HOLDER



WASHDOWN



CO-CAPATIN'S CUPHOLDER AND STORAGE



SOLID SURFACE LIDS FOR ENTERTAINMENT CENTER



WICKER WRAP BOXES



BAYSIDE INTERIOR WITH QUILTING



SKI TOW BAR

Select Tan

Select Gray



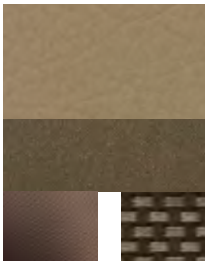
Box
Wrap

VINYL or WICKER

VINYL or WICKER

Sahara Tan

Lunar Gray



Box
Wrap

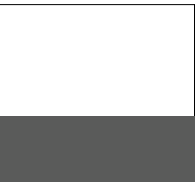
VINYL or WICKER

VINYL or WICKER

Bayside Caramel

Bayside Slate

Bayside White



Backrest
Lower
Roll

STANDARD or PLUS

STANDARD or PLUS

STANDARD or PLUS

Box
Wrap

VINYL or WICKER

VINYL or WICKER

VINYL or WICKER



Carbon



Navy



Black Cherry



Mocha



Kiwi Green



Vapor Blue

Only Available in Bayside Slate
and Bayside White Interiors

Luxe Plus is also an available Accent Color.
It replaces the colored accents with a
neutral color stripe and adds a high-contrast
premium vinyl as a base accent.



Select Furniture
(Shown in Tan with Mocha Accent)



Select Furniture
(Shown in Gray with Carbon Accent)



Luxe Furniture
(Shown in Caramel with Luxe Plus Accent)



Luxe Furniture
(Shown in Slate with Kiwi Green Accent)

Pearl White

Kiwi Green

Autumn Gold

Vapor Blue (Formally Topaz)



Gold



Silver



Martini Green



Vino



Steel Blue



Black

*Reference Page 86 for Rail Skin color selections/options.



	1886 C	2086 BF	2086 C	2086 F	2086 FP	2086 SB
LOA/DECK	19' 10" / 18'	20' 10" / 19'	20' 10" / 19'	20' 10" / 19'	20' 10" / 19'	20' 10" / 19'
PONTOON LENGTH	18' 4"	19' 4"	19' 4"	19' 4"	19' 4"	19' 4"
BEAM	8' 6"	8' 6"	8' 6"	8' 6"	8' 6"	8' 6"
PONTOON DIAMETER	25"	25"	25"	25"	25"	25"
FUEL CAPACITY (GAL)	30	30	30	30	30	30



	2186 MT	2186 SB	2286 BF	2286 C	2286 CC	2286 F
LOA/DECK	21' 10" / 20'	21' 10" / 20'	22' 10" / 21'	22' 10" / 21'	22' 10" / 21'	22' 10" / 21'
PONTOON LENGTH	20' 4"	20' 4"	21' 4"	21' 4"	21' 4"	21' 4"
BEAM	8' 6"	8' 6"	8' 6"	8' 6"	8' 6"	8' 6"
PONTOON DIAMETER	25"	25"	25"	25"	25"	25"
FUEL CAPACITY (GAL)	30	30	30	30	30	30



2186 C	2186 C4	2186 C4H	2186 F	2186 FP	2186 FS
21' 10" / 20'	21' 10" / 20'	21' 10" / 20'	21' 10" / 20'	21' 10" / 20'	21' 10" / 20'
20' 4"	20' 4"	20' 4"	20' 4"	20' 4"	20' 4"
8' 6"	8' 6"	8' 6"	8' 6"	8' 6"	8' 6"
25"	25"	25"	25"	25"	25"
30	30	30	30	30	30



2286 FP	2286 FS	2286 MT	2286 SB	2286 SFL
22' 10" / 21'	22' 10" / 21'	22' 10" / 21'	22' 10" / 21'	22' 10" / 21'
21' 4"	21' 4"	21' 4"	21' 4"	21' 4"
8' 6"	8' 6"	8' 6"	8' 6"	8' 6"
25"	25"	25"	25"	25"
30	30	30	30	30



	2386 C	2386 C4	2386 CC	2386 DT	2386 FS	2386 MT
LOA/DECK	23' 10" / 22'	23' 10" / 22'	23' 10" / 22'	23' 10" / 22'	23' 10" / 22'	23' 10" / 22'
PONTOON LENGTH	22' 4"	22' 4"	22' 4"	22' 4"	22' 4"	22' 4"
BEAM	8' 6"	8' 6"	8' 6"	8' 6"	8' 6"	8' 6"
PONTOON DIAMETER	25"	25"	25"	25"	25"	25"
FUEL CAPACITY (GAL)	30	30	30	30	30	30

	25" 2 Tube (Standard)		27" 2 Tube		25" Sport Tube		27" Sport Tube		25" GTP Triple Tube		27" GTP Triple Tube	
	Per. Cap.	Max HP	Per. Cap.	Max HP	Per. Cap.	Max HP	Per. Cap.	Max HP	Per. Cap.	Max HP	Per. Cap.	Max HP
1886	10	75	11	90	10	105	11	115	10	115	12	115
2086	11	90	12	100	10	115	12	115	12	150	13	150
2186	11	150	13	150	12	150	13	150	12	200	14	200
2286	12	150	14	150	12	150	14	150	13	250	14	250



2386 SB	2386 SBH	2486 C	2486 CC	2486 DT	2486 SB	2486 SFL
23' 10" / 22'	23' 10" / 22'	24' 10" / 23'	24' 10" / 23'	24' 10" / 23'	24' 10" / 23'	24' 10" / 23'
22' 4"	22' 4"	23' 4"	23' 4"	23' 4"	23' 4"	23' 4"
8' 6"	8' 6"	8' 6"	8' 6"	8' 6"	8' 6"	8' 6"
25"	25"	25"	25"	25"	25"	25"
30	30	30	30	30	30	30

	25" 2 Tube (Standard)		27" 2 Tube		25" Sport Tube		27" Sport Tube		25" GTP Triple Tube		27" GTP Triple Tube	
	Per. Cap.	Max HP	Per. Cap.	Max HP	Per. Cap.	Max HP	Per. Cap.	Max HP	Per. Cap.	Max HP	Per. Cap.	Max HP
2386	13	150	14	150	14	150	16	150	15	300	16	300
2486	14	150	16	150	15	150	16	150	15	300	16	300

SR



SW 180 F - Shown with Silver Rails and Charcoal Rail Skins.



SW 180 F

LEGENDARY QUALITY AND DESIGN FOR LESS

No gimmicks, no compromises, just pure, enduring **Godfrey** quality in a boat that delivers everything you need and nothing you don't.



SW 226 BF



SW 180 C - Shown with Silver Rails and Metallic Black Rail Skins.



PURE AND SIMPLE

The **SR Cruise** is available in 17 to 22-foot lengths with a capacity up to 12 people and a maximum 150-horsepower rating.



160 C



180 C



200 C



206 C



226 C



CHANGING ROOM CHAISE



SELF DRAINING SEAT BASE



HELM



SW 180 F - Shown with Silver Rails and Charcoal Rail Skins.

BUILT FOR ANGLERS

Pick your fish seat configuration from these versatile **SR Fish** layouts featuring open deck designs in your choice of 17 to 22-foot length decks.



160 F

180 F

206 BF

226 BF

226 F



SW 180 F - Shown with gray vinyl flooring






HELM STORAGE



UPGRADED FISH SEATS



TACKLE STORAGE

					
	160 C	160 F	180 C	180 F	200 C
LOA/DECK	17' 5" / 16'	17' 5" / 16'	19' 5" / 18'	19' 5" / 18'	20' 5" / 19'
PONTOON LENGTH	16' 4"	16' 4"	18' 4"	18' 4"	19' 4"
BEAM	8' 0"	8' 0"	8' 0"	8' 0"	8' 0"
PONTOON DIAMETER	23"	23"	23"	23"	23"
PERSON CAPACITY	8	8	9	9	10
MAX HORSEPOWER	60	60	75	75	90
FUEL CAPACITY (GAL)	18	18	18	18	18

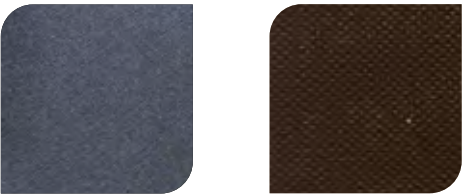
					
	206 BF	206 C	226 BF	226 C	226 F
LOA/DECK	20' 5" / 19'	20' 5" / 19'	21' 10" / 20'	21' 10" / 20'	21' 10" / 20'
PONTOON LENGTH	19' 4"	19' 4"	20' 4"	20' 4"	20' 4"
BEAM	8' 6"	8' 6"	8' 6"	8' 6"	8' 6"
PONTOON DIAMETER	23"	23"	25"	25"	25"
PERSON CAPACITY	10	10	11	11	11
MAX HORSEPOWER	90	90	150	150	150
FUEL CAPACITY (GAL)	18	18	30	30	30

	25" 2 Tube (upgrade)	
	Per. Cap.	Max HP
160	9	70
180	11	75
200/206	12	90

	SW motorpan & Fuel System			
	25" 2 Tube (Standard)		25" Sport Tube	
	Per. Cap.	Max HP	Per. Cap.	Max HP
226	11	150	12	150

FURNITURE

ACCENT COLORS



Carbon

Mocha



Navy

Black Cherry



Standard Frappe

CANVAS COLORS



Black

Navy

Black Cherry



Tan

Charcoal

Gray

RAIL SKIN COLORS



Metallic Black

Metallic Navy

Metallic Black Cherry

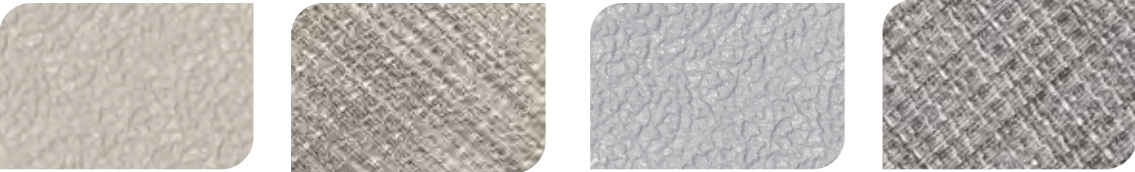


Taupe

Charcoal

Metallic Pearl White

FLOORING OPTIONS



Taupe Vinyl (Standard)

Metro Tannery

Gray Vinyl (Standard)

Metro Gray

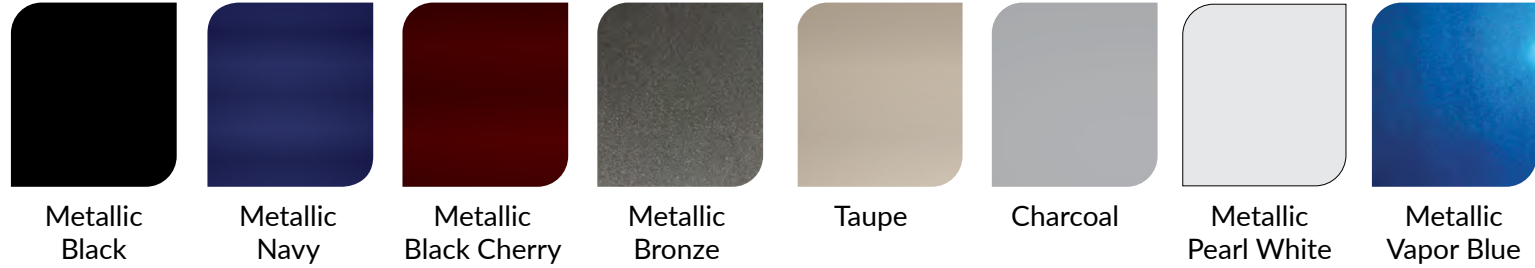
SANPAN | AQUAPATIO | MONACO | SWEETWATER

RAIL SKINS + CANVAS + FLOORING

SPORT ARCH + SPORT TOWER



RAIL SKINS/ RAIL SKIN INSERT*



*Smooth Rail Skin Available on Sanpan Only. Smooth Rail Skin Insert Available on Sanpan and Monaco.

CANVAS



FLOORING



SPORT ARCH

Available in Black and White All Motorized



SPORT TOWER



Available on the following models: (Requires C-Seating Exchange)

SANPAN

2600 SBC, 2600 ULC, 2600 SBW, 2600 ULW

AQUAPATIO

235 RL, 235 SB, 255 RL, 255 SB, 255 UL,
259 DFLW, 259 RLW, 259 SBW, 259 ULW

MONACO

235 RL, 235 SB, 255 RL, 255 SB

BUILT TO LAST

Underneath our dynamic layouts and luxury comfort is a precision framework only **Godfrey** can offer. Our engineers, designers and craftspeople specialize in creating an unforgettable ride by starting beneath the water line and building up to the comfortable deck you and your family deserve.



DESIGNED FOR COMFORT

When it comes to pontoon boats, comfort is key. For over 60 years, **Godfrey** has created pontoons with elegant layouts and exclusive luxury so you and your family can enjoy a refined relaxation like you've never experienced.



ULTRA TUBES

Heavy-duty, multi-chambered Ultra 25" and UltraMax 27" tubes give our pontoons superior buoyancy and durability compared to standard pontoon tubes.

FULL-LENGTH KEEL

Our thick, extruded RigidTrack keel provides superior tube protection and tracking performance.



HDX DRYFINS

Our tubes come standard with oversized, heavy-duty, extruded HDX DryFins. Their added strength and extruded concave shape curl down the water for a smooth, dry ride.

WAVECUTTER NOSECONES

Our overbuilt WaveCutter nosecone design leads the way with an aggressive entry angle at the bow that slices through rollers and chop, resulting in a smooth ride with improved efficiency and performance.



FULL-LENGTH F-CHANNEL RUB RAIL

An extra-thick rubrail design creates a durable deck-edge finish that protects the boat from dock rash and dings.



LIFTING STRAKES

Our oversized lifting strakes create more lift, resulting in less drag, greater fuel efficiency, and optimized performance and handling.



C-CHANNEL JOISTS

Heavy-duty, oversized, extruded C-channels create a deck structure with unmatched durability.



OVERSIZED FOUNDATION BRACKETS

Larger saddle brackets establish a stronger contact and hold with the tube to minimize racking in rough water.



FLOORING

Our heavy-duty flooring is supported by 3/4", 7-ply, marine-grade plywood that lasts longer than the competition's.



LIVING-ROOM-GRADE FURNITURE

Our durable seat bases are topped with multi-density foam for plush softness where you want it and firm support where you need it.



SELF-DRAINING SEAT BASE

Our 100% wood-free, Rotocast seat bases are light, strong and incorporate an integrated drainage system that eliminates standing water.

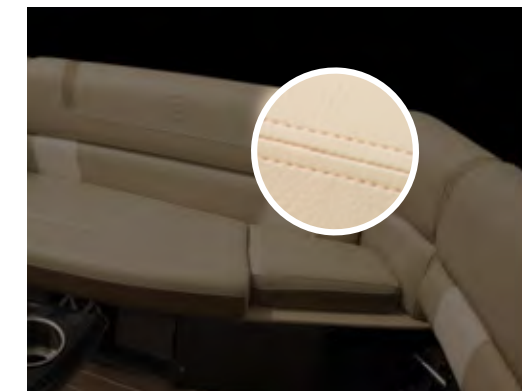


EXTRUDED & FULLY ANODIZED RAILS

We anodize all of our rails after welding to protect them from the elements and provide a long-lasting, clean finish.

3M FOAM ADHESIVE TAPE

We use 3M foam adhesive tape between the panels and the pinch slot to eliminate vibration for a rattle-free ride in any condition.



EVERLAST STITCHING

Our strong, Everlast-stitched seams hold up season after season.

PERFORMANCE
PACKAGES



PERFORMANCE PACKAGE —**TWO TUBE**

25" OR 27"—**SPORT TUBE**

GTP™ TRIPLE TUBE

PERFORMANCE PACKAGE SPECIFICATIONS BY MODEL



- Ultra 25" tubes with heavy-duty decking and exclusive Slipstream motorpan
- Under-deck skin (full length) with inside skirting
- Lifting strakes
- SeaStar hydraulic steering



- 25" Sport Tube with lifting strakes
- Add third 27" tube
- Strakes on center tube only
- Standard Slipstream motorpan and fuel tank (includes tube upgrade)
- Heavy-duty channels



- Oversized 6" lifting strakes
- Add third 27" tube with launch pad
- Under-deck skin (full length)
- Lifting strakes and Inside skirting
- Power-assist hydraulic steering on Sanpan and AquaPatio Models only
- 45 gal. fuel tank and GPS speedometer
- Heavy-duty channels

MODEL	25" SPORT TUBE		27" SPORT TUBE		25" GTP™ TRIPLE TUBE		27" GTP™ TRIPLE TUBE	
	PERSON CAPACITY	MAX. HP	PERSON CAPACITY	MAX. HP	PERSON CAPACITY	MAX. HP	PERSON CAPACITY	MAX. HP
195/1886	10	105	11	115	11	115	12	115
2086	10	115	12	115	12	115	13	150
215	11	150	12	150	12	200	14	200
2186/226	11	150	13	150	13	175	14	175
2286	12	150	14	150	13	200	14	250
235/2200	12	150	15	150	13	250	16	300
2386	14	150	15	150	15	200	15	300
2486	15	150	16	150	15	200	16	300
255	15	150	16	150	15	250	16	350
259/2500	16	150	17	150	16	300	16	350

FLOOR PLANS



GAUGES +
FISH FINDER/
CHARTPLOTTERS



C-SEATING
CO-CAPTAIN'S CHAIR

SANPAN
AQUAPATIO
MONACO
SWEETWATER



STANDARD C-SEATING

Replace port-side chaise lounge
with two captain's chairs

D-SEATING
DUAL CAPTAIN'S CHAIR

AQUAPATIO
MONACO
SWEETWATER



STANDARD D-SEATING

Replace port-side chaise lounge
with two captain's chairs

(available in bow or
midship on select models)

P-SEATING
PIT SEATING

SWEETWATER



STANDARD P-SEATING

Longer stern pit bench with
changing room in chaise
and smaller aft deck lid

EXTENDED DECK
OPTION AVAILABLE

MONACO



STANDARD EXTENDED DECK

Extended stern platforms
(port and starboard)

GAUGE OFFERINGS

	SR	SWEETWATER	MONACO	AQUAPATIO	SANPAN
Faria 3.5" Thames	S	S			
Faria 4.5" Columbia Multi-function			S	S	
Faria 4.5" Columbia Multi-function GPS		O	O	O	
VeeThree "Godfrey" Carbon Fiber GPS				(S) Windshield Models	S
"Godfrey" Digital		O	O	O	O

FISH FINDERS/CHARTPLOTTERS

Depth/Fish Finder Hook 2-4	O	O		
Simrad GO 5 XSE Touchscreen Fishfinder/Chartplotter	O	O	S	
Simrad GO 7 XSE Touchscreen Fishfinder/Chartplotter			S*	S
Garmin 742xs Touchscreen Fishfinder/Chartplotter		O	O	O
Garmin 942xs Touchscreen Fishfinder/Chartplotter			O	O
(2) Garmin 742xs Side by Side W/ C Zone			O*	O

*Windshield Models Only

AUDIO SYSTEMS

FULL SPECTRUM
RGB LIGHTING



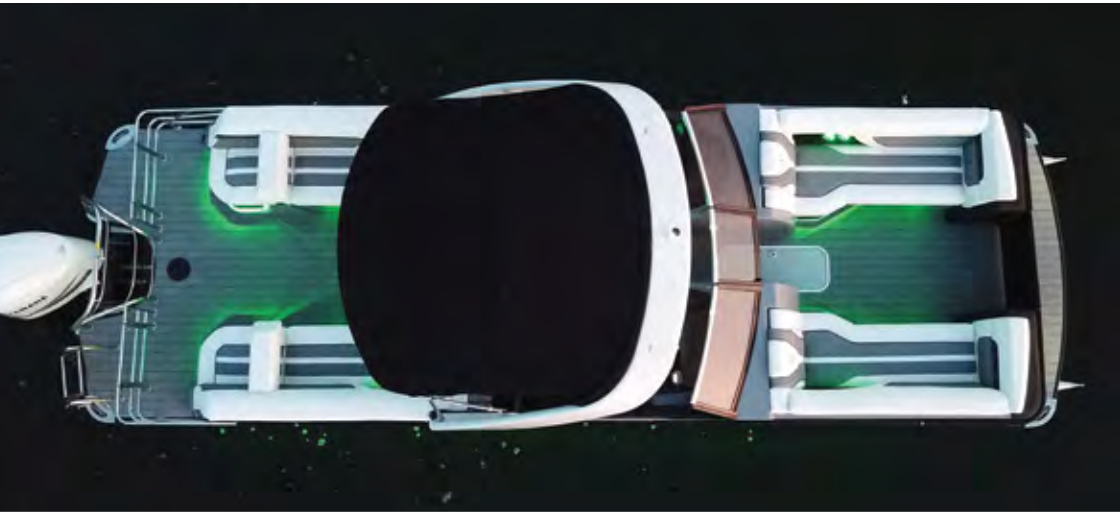
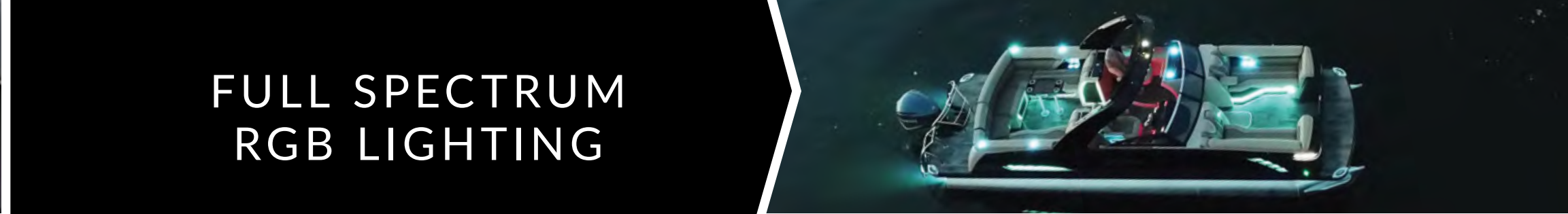
FUSION STANDARD—MS Head Unit, 4 Black Speakers	S	S	S	
FUSION COLOR CAST—MS Head Unit, 4 Sport Gray RGB Speakers	O	O	O	
FUSION APOLLO SILVER DSP—Apollo DSP Head Unit, 4 XS Upgraded RGB Speakers, Chrome Grilles	O	O	O	
FUSION APOLLO GOLD DSP—Apollo DSP Head Unit, 6 XS Upgraded RGB Speakers, Chrome Grilles, 4-channel amplifier		O	O	
FUSION APOLLO GOLD DSP (SANPAN)—Apollo DSP Head Unit, 4 XS Upgraded 7.7" RGB Speakers, Chrome Grilles, 4-channel amplifier				S
FUSION APOLLO PLATINUM DSP—Apollo DSP Head Unit, 6 XS Upgraded RGB Speakers, Chrome Grilles, 8-channel amplifier, RGB Subwoofer, wireless remote			O	O



*The SR Series has Fusion Head Unit & 2 Speakers Standard, 4 Speakers Optional

JL GODFREY EXTREME SOUND (GXS)— Stereo & Light Controller GXS Touchscreen RGB Controller & Stereo head unit, JL DSP System: RGB Gunmetal Speakers, DSP Amplifier, RGB Subwoofer

- One package that combines an all new JL DSP system with a Godfrey branded head unit.
- Stereo package is custom developed to fit our application
- Touchscreen with full stereo and RGB system control
- RGB screens are all visual response with user-defined presets
- User-defined stereo presets and settings





LIMITED LIFETIME WARRANTY

Because our pontoons are crafted to last longer than the competition, we offer Limited Lifetime Warranties on all pontoon tubes, rails, gates, and Stratatech chassis. Our transferable Limited Lifetime Warranty allows you to repair or replace any MarineDeck PTP deck panels and related PTP products. TEN-year warranties cover flooring, canopy fabrics, furniture, upholstery, gauges, electronics, and all other factory-installed components.